

I AM
A CINEMA. LOVE
ME.

Showing at the Lexi from **12 January**



Fri 12 Jan

18:15 **CALL ME BY YOUR NAME** (15)
21:00 **MOLLY'S GAME** (15)

Sat 13 Jan

16:00 **PADDINGTON 2** (PG)
18:15 **FILM STARS DON'T DIE IN LIVERPOOL** (15)
20:30 **MOLLY'S GAME** (15)

Sun 14 Jan

15:00 **PADDINGTON 2** (PG)
17:15 **THE FLORIDA PROJECT** (15)
19:40 **MOLLY'S GAME** (15)

Mon 15 Jan

11:00 **PADDINGTON 2** (PG) *carers & babies*
15:00 **MOLLY'S GAME** (15)
18:30 **MOUNTAIN** (PG)
20:20 **MOLLY'S GAME** (15)

Tue 16 Jan

18:25 **MOONLIGHT** (15)
20:45 **MOLLY'S GAME** (15)

Wed 17 Jan

18:30 **MOUNTAIN** (PG)
20:20 **MOLLY'S GAME** (15)

Thu 18 Jan

18:15 **CALL ME BY YOUR NAME** (15)
21:00 **MOLLY'S GAME** (15)

.....
www.thelexicinema.co.uk

020 3011 5523

(Booking line Mon - Fri, 11:00 am - 6:00 pm)

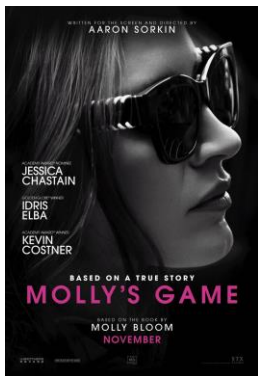
194b Chamberlayne Road Kensal Rise
London NW10 3JU



MAIN FEATURE

MOLLY'S GAME

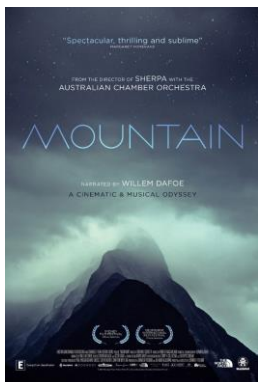
Jessica Chastain is perfectly partnered by Idris Elba in this story of real life 'poker princess' Molly Bloom. "A near-perfect crime drama with an enthralling emotional tangle at its heart." ★★★★★ Times



MOUNTAIN

LEXDOX

What's the connection between Willem Dafoe, the Australian Chamber Orchestra, and the siren call of the summit? Answer: this stunning documentary about the ineluctable attraction of the Earth's supreme heights. "A sublime rush of adrenaline and orchestral beauty." ★★★★★ Guardian



CALL ME BY YOUR NAME

Another chance to view "one of the year's most romantic movies, and also one of the best." ★★★★★

FILMSTARS DON'T DIE IN LIVERPOOL

Also a powerful romance, "it's a beguiling story and Jamie Bell and Annette Bening are tremendous as the star-crossed lovers." ★★★★★

THE FLORIDA PROJECT

The *Moonlight* of this year, an exceptional film about childhood, America, hardship... ★★★★★

MOONLIGHT

An exceptional film about childhood, America, hardship. ★★★★★

PADDINGTON 2

We just can't send the friendly furball on his way yet! Matinees only £5.

COMING SOON...

THREE BILLBOARDS... from Fri 19 Jan
DARKEST HOUR from Fri 26 Jan



Printing sponsored by



WE DONATE 100% OF OUR PROFITS TO THE SUSTAINABILITY INSTITUTE CHARITY