

**THE LEXI**  
**CINEMA**

**YOUR HIRE**  
**AT THE**  
**LEXI**



# ABOUT US

**The Lexi** is a much-loved neighbourhood cinema. Since we opened in 2008, we've seen around 400,000 visitors come through the doors, added a second screen and continued our commitment to donating 100% of profits to charity. We also run an extensive programme of community and outreach screenings.

**Recently refurbished** throughout, our new look has featured in **Wallpaper Magazine** and also won a prestigious **Red Dot** design award in 2022, and our Screen 2 / Lexi Hub build won a **Civic Award** in March 2023 as a stunning looking, sustainable build with a huge social impact.

**We are London's only social enterprise cinema** and have a unique relationship with the Sustainability Institute near Lymington in South Africa. The cinema offers a bridge via financial support to the institute in exchange for ongoing support, advice and guidance on making the cinema as green and sustainable as possible.

**The Lexi is a cinema with purpose.**



# HUNDREDS OF HAPPY CUSTOMERS

We have worked with hundreds of hire clients, which means we have made about a zillion cups of coffee for **film crews**, poured a million glasses of fizz for **PR functions** and tended the bar at more than a few **office Christmas parties**...

Our clients have **launched products**, and presented to their sector VIPs using our beautiful cinema to showcase their brand.

We're a great space for your **AGM**, and our specialty is hosting **unforgettable Away Days**. The Lexi makes an inspiring venue for your team's strategy-building session.

Our unflappable team will do whatever it takes to deliver your event, and the funds from your hire will directly support our access screenings for our community here in Kensal Rise.





# TWO GORGEOUS SCREENS, ONE LOVINGLY-STOCKED BAR

**Screen 1** houses our spectacular Bruce Munro light installation. If you're looking for grandeur, this is our largest screen, with image-hugging, multiple-setting black theatre curtains to add a sense of spectacle. It's perfect for premières, important showcases, Q&As and celebrations where only a big screen will do! 5.2m x 2.21m (17.0" x 7.3") Matt white microperforated screen.

In **Screen 2** you'll find the same comfy seats, cosy feel and absolute beast of a sound system (Grr!) for your guests to kick back and enjoy.















## SCREEN ONE

**An auditorium with grandeur, perfect for showcases, networking, away days**

70 seats  
Large screen  
Barco DP2K-8SLP Smart Laser Projector  
7.1 Dolby Surround  
Wireless Microphone

**From £225 + VAT  
per hour.**



## SCREEN TWO

**An intimate screening room ideally suited for showing unfinished work, focus groups, presentations or workshops.**

30 seats  
Barco DP2K-8SLP Smart Laser Projector  
5.1 Dolby Surround  
Wireless Microphone

**From £180 + VAT  
per hour**



## FILM SHOOTS / PHOTOGRAPHY

**A light, airy and versatile space with a clean and elegant palette that makes an excellent backdrop for photo shoots.**

**From £90+ VAT  
per hour**



# AN AWAY-DAY WITH A DIFFERENCE

From **£50 + VAT per delegate;** min 40 people

Coffee breaks x 2  
Buffet lunch

**09:00 – 15:00**

Presentations / training – your sessions for your people

**Film screening 15:00 – 17:00**

Popcorn for all and a film from our current programme!

**ESG:** if you would like a short talk to kick off your day, about the Lexi, running a social enterprise, our sustainable build, or the groundbreaking work we support in South Africa, one of our board of Non-execs would be happy to welcome you with an introduction to the Lexi.





## **Included in all hires:**

Technical support during planning and delivery of your event

Event staffing on the day

Welcome slideshow of your visuals

Your spotify playlist via our soundsystem

## **Added extras for your guests:**

Coffee and pastries on arrival £5

Popcorn per person £2.40

Fizz\* on arrival, for 70 people (screen 1)  
£420

Fizz\* on arrival, for 30 people (screen 2)  
£200

\*includes non-alcoholic options

Your message spelled out on our iconic  
readograph canopy £250

Prices exclude VAT





# FEEDBACK FROM HIRE CLIENTS...

Your staff on the day were simply amazing; very welcoming, helping us with all our concerns and a very complex event set-up. This was a major fundraiser for us and the leadership of our organisation were delighted with the response of our patrons to the venue. My sincere thanks.

**Tenzin Kunga, Advocacy Officer  
Free Tibet.**

We loved hosting our VIP launch with you and your support in the lead-up was second to none. Your sound system is incredible, as I'm sure you know.

We will be back.

**Terry Gross, CEO  
The Wild Night Company**

Your experience on the tech side was a great help. Our clients loved seeing the space and networking in your beautiful cinema – we have had great feedback from attendees across the borough. Your community credentials and commitment to sustainability make all the difference.

**Leone Buncombe, Garden Studios**

We love the Lexi. Your new look is incredible and we appreciate all you do for the crew when we're there.

**Bahram Farhadtooski, BBC  
Producer**

Highly recommend Screen 1 at the Lexi for an afternoon of training and strategy-building, followed by a film screening and drinks. It's a highlight in our team calendar every year. These people are serious about sustainability, and giving back which makes such an inspiring atmosphere to bring our people together.

**Annie Shepherd, Salix**



# PREVIOUS HIRE CLIENTS INCLUDE



## TOSHIBA





# AWARDS? OH GO ON THEN...

## **2023 Civic Trust Awards – Winner**

"Outstanding architecture, planning and design in the built environment."

Shortlisted for: AJ Retrofit Award, RIBA McEwen Award, FX Awards  
(Finalist)

## **2022 Red Dot Award – Winner**

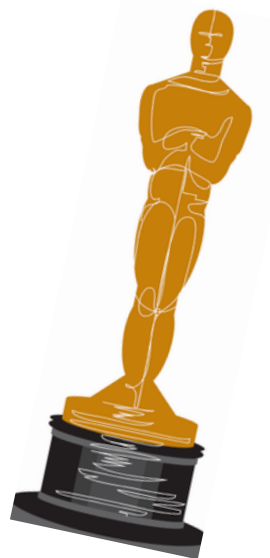
The prestigious Red Dot was awarded for our innovative venue signage

## **2020 – Mayor's Fund**

We are very proud that this was the first time the highest possible grant was awarded by the Mayor, as part of #MakeLondon

## **2019 and 2020 – Nat West SE100 Winners**

The SE100 lists the too 100 Social Enterprises in the UK – and we have made the list twice!





**We would love to host you!**

rosie@thelexicinema.co.uk

0208 955 1521